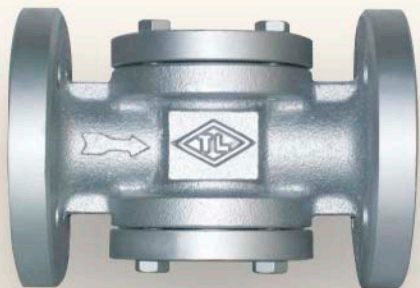
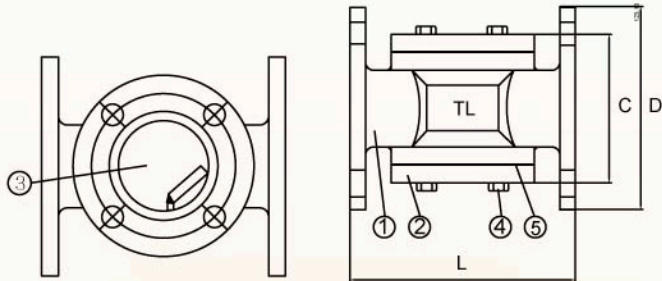


# TL-41

## Sight Glass Flanged Ends

- Material: Cast Iron / CF8 / CF8M
- Size: 1/2"~8"



## Material list

NO	Parts name	Material		
1	Body	Cast Iron	SUS 304	SUS 316
2	Cap	Cast Iron	SUS 304	SUS 316
3	Glass	Tempered glass		
4	Bolt	SS 41	SUS 304	SUS 304
5	Packing	TV 1500	PTFE	PTFE
W.P.		1-10 Kg/cm <sup>2</sup>		
W.T.		100°C		

## JIS-10K/ANSI-150LB Dimensions

INCH	L	10K			150LB		
		D	C	KG	D	C	KG
1/2"	130	95	70	3	89	60.5	3
3/4"	140	100	75	3.5	98	70	3.5
1"	160	125	90	5	108	79.5	5
1 1/4"	180	135	100	7.2	117	89	7.2
1 1/2"	190	140	105	7.3	127	98.5	7.3
2"	220	155	120	7.3	152	120.5	8.7
2 1/2"	260	175	140	14	178	139.5	14
3"	270	185	150	16	190	152.5	15.5
4"	320	210	175	22	229	190.5	23
5"	370	250	210	33	254	216	38
6"	412	280	240	45	279	241.5	44
8"	460	330	290	62	343	298.5	64

UNIT : M/M

## DIN3202 PN16-F1 Dimensions

INCH	L	D	C	KG	
				304	C.I.
1/2"	130	95	65	3	3.2
3/4"	140	105	75	3.3	3.8
1"	160	115	85	4	5
1 1/4"	180	140	100	5.8	7.4
1 1/2"	200	150	110	7	8
2"	230	165	125	9	9
2 1/2"	290	185	145	14	15
3"	310	200	160	15	17
4"	350	220	180	21	22
5"	370	250	210	37	37
6"	412	285	240	46	45
8"	460	340	295	70	—

UNIT : M/M